

Installation instructions



JAXAL



Trailer covers



General instructions for Jaxal trailer covers

- Installation instructions must always be followed when installing the trailer cover
 - When the trailer cover is in open position, always use the wind hook to prevent damage
 - When using a trailer, even if covered with a top, always strap your load down!
 - The trailer cover can be washed with water and general car washing detergents
 - Transportation of items on top of the trailer top is prohibited
 - Always remove snow from the top of the trailer top, even when not using the trailer/trailer top
 - Always use the handle to raise and lower the trailer top
-



Installation instructions with a mechanical spring

Start the installation by placing the trailer top upside down

1. Grommets

Install the grommets to the drilled holes (A, B, and C) in the trailer cover (figure 1).

2. Installing the trailer cover hinge

Fasten the hinge to the trailer cover holes A and C as depicted in **Figure 1**. Use the screws M8x45, washers and lock nuts provided in the equipment bag. The visible part of the threaded brass bushing in the hinge goes against the trailer cover.

Drill hole D in the trailer cover using a 13 mm drill, install the grommet, and fasten with M8x45 screws, washers and lock nuts. The nuts are to be installed inside the trailer cover, the washers M8x21 outside the trailer between the grommet and the M8x45 screw.

3. Installing the seal

Clean the square pipe (15x25 mm) fastened to the lower edge of the trailer cover with denatured alcohol or other similar detergent. Fasten the seal on top of the square pipe. **Note!** Do not stretch the seal while installing it (figure 1)

4. Installing the trailer top

Lift the trailer cover on top of the trailer, go inside the trailer, and make sure that the trailer cover is located lengthwise in the middle of the trailer. Check that the trailer cover is tight to the side of the trailer. Raise hinge pipe 1 into a horizontal position, mark holes E and F to the trailer, and drill the holes using a 9 mm drill. Fasten the hinge to the trailer with M8x20 screws, washers and nuts (for hinge series with 500x20x30 arm pipe, use screw M8x35).

Note! The M8x21 washer goes on the outside of the trailer. Lift the trailer cover up so that the spring hole and hinge hole B are aligned.

Fastening the spring with an M8x45 screw (double spring M8x70 mm, **Figure 3**). Do not tighten the spring bolts too tight. The socket at the end of the spring must spin freely.

Note! Install the spring as depicted in **figure 2** to hole B, so that the arrow-marked side of the spring is pointing towards the front of the trailer.





5. Installing the hook latches and handle

Place the hook latches to the back end of the trailer cover sides, mark the holes and drill 5.5 mm holes into the trailer cover. Fasten the hook latches with M5x22 mm screws, washers and lock nuts (**figure 4**).

Where the counterpart of the hook latch is installed in the trailer: Mark the place of the counterpart on the trailer to an appropriate height, drill 5.5 mm holes and fasten the counterpart with M5x22 screws, washers and lock nuts (**figure 5**).

The handle is fastened to the lower part of the back wall to the desired height. Drill 5.5 mm holes into the trailer cover and fasten in the same way as with the hook latches (**figure 6**). Fasten also the down pulling string of the trailer top to the fastening screw of the handle.

6. Wind hook

Using the wind hook located in the lower part of the hinge, make sure that the trailer cover stays open (**figure 7**).



3. Lift the trailer cover in place on top of the trailer, and make sure it is located lengthwise in the middle of the trailer.

Drill a hole into the trailer through the hole of the plate in the front part of the trailer cover using a 9 mm drill (**Figure 5**), and then fasten the trailer top with two M8x60 bolts and lock nuts. Trailers with no square pipe in the front edge: Tighten the M8x60 bolt with two M8 nuts from both sides of the side edges (**Figure 6**).

4. Lift the trailer cover open and fasten the lower end of the gas spring to the bracket of the gas spring in the trailer (**Figures 7 and 8**).

5. Close the trailer cover. Place the hook latches to the back end of the trailer top sides. Mark the holes and drill 6 mm holes into the trailer cover. Fasten the latches with M5x22 screws, washers and lock nuts (**Figure 9A**).

Trailer cover where the counterpart of the hook latch is installed in the trailer: Mark the place of the counterpart on the trailer to an appropriate height, drill 5.5 holes and fasten the counterpart with M5x22 screws, washers and lock nuts (**Figure 9B**).

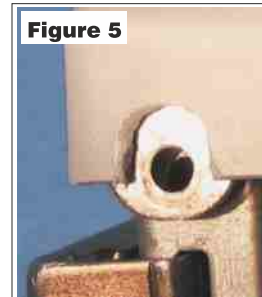


Figure 5

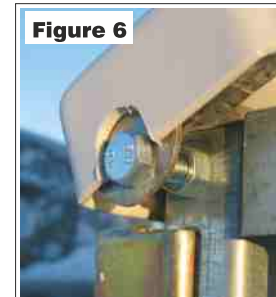


Figure 6

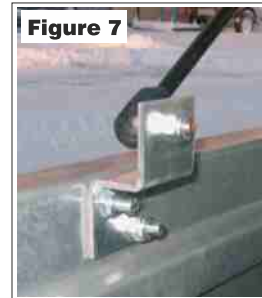


Figure 7



Figure 8



Figure 9A



Figure 9B



JAXAL AB

Address: Företagsvägen 2, 957 32 Övertorneå, Sweden
Phone: +46 927 775 05. Fax: +46 927 774 75. E-mail: post@jaxal.se

www.jaxal.se

 **JAXAL**
trailer cover